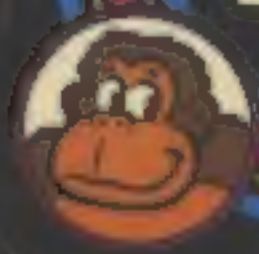


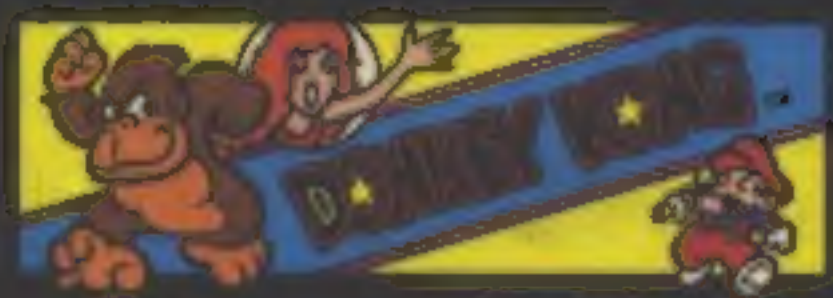
# MY HIGH SCORE

\_\_\_\_\_  
NAME

\_\_\_\_\_  
SCORE







IT'LL DRIVE



BANANAS





© 1992 Nintendo of America, Inc.

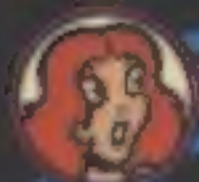
PRINTED IN U.S.A.



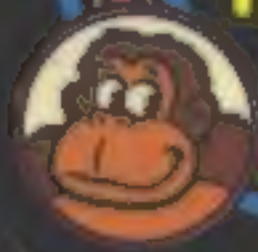
# NO MONKEY BUSINESS







DONKEY  
KONG™  
IS  
BETTER  
THAN  
HOMELWORK



© 1982 NINTENDO OF AMERICA, INC.

MADE IN U.S.A.







IT'S  
BETTER  
WITH  
DONKEY  
KONG™



© 1982 Nintendo of America, Inc.

FFTD 35114





OFFICIAL  
DONKEY KONG™ KILLER





TAKE IT  
ONE  
STEP  
AT A  
TIME!

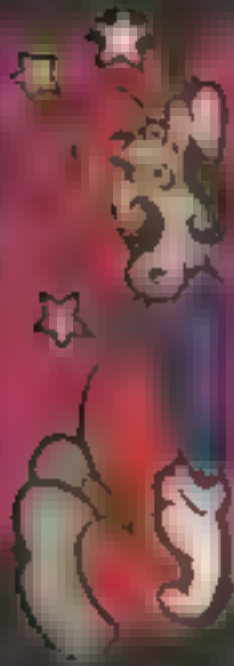


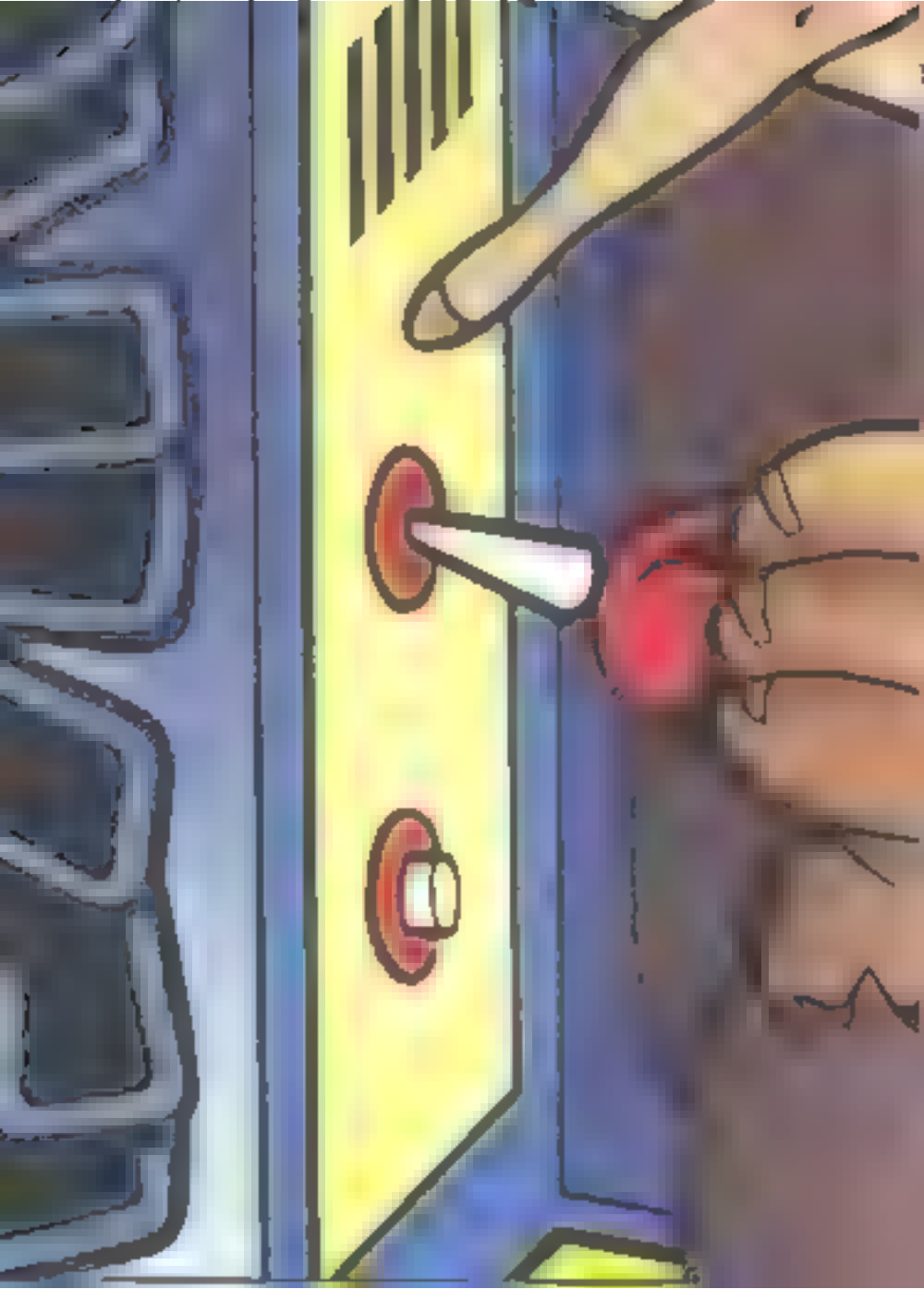


I MADE A MONKEY  
OUT OF  
DONKEY KONG!



THE WAY TO







FRANCIS,

THE BIRD







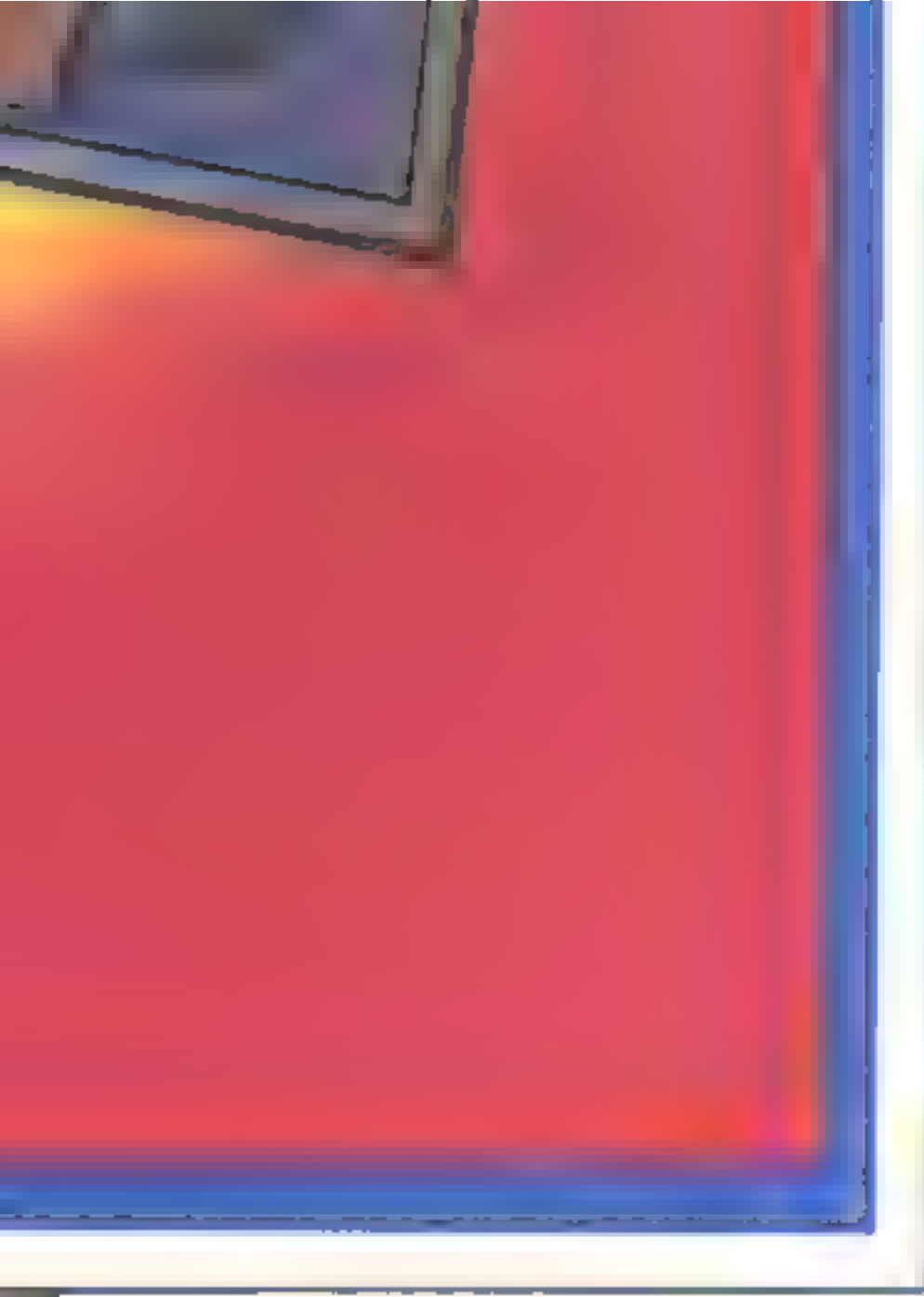
LET'S **NAIL**





Don't get on the Beam!



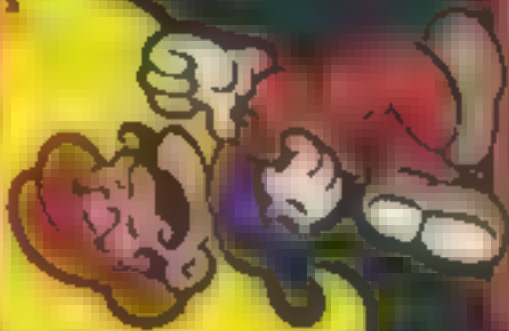






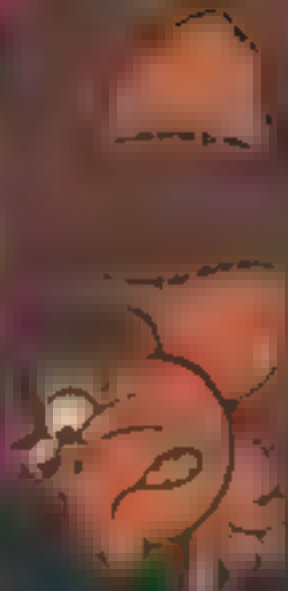


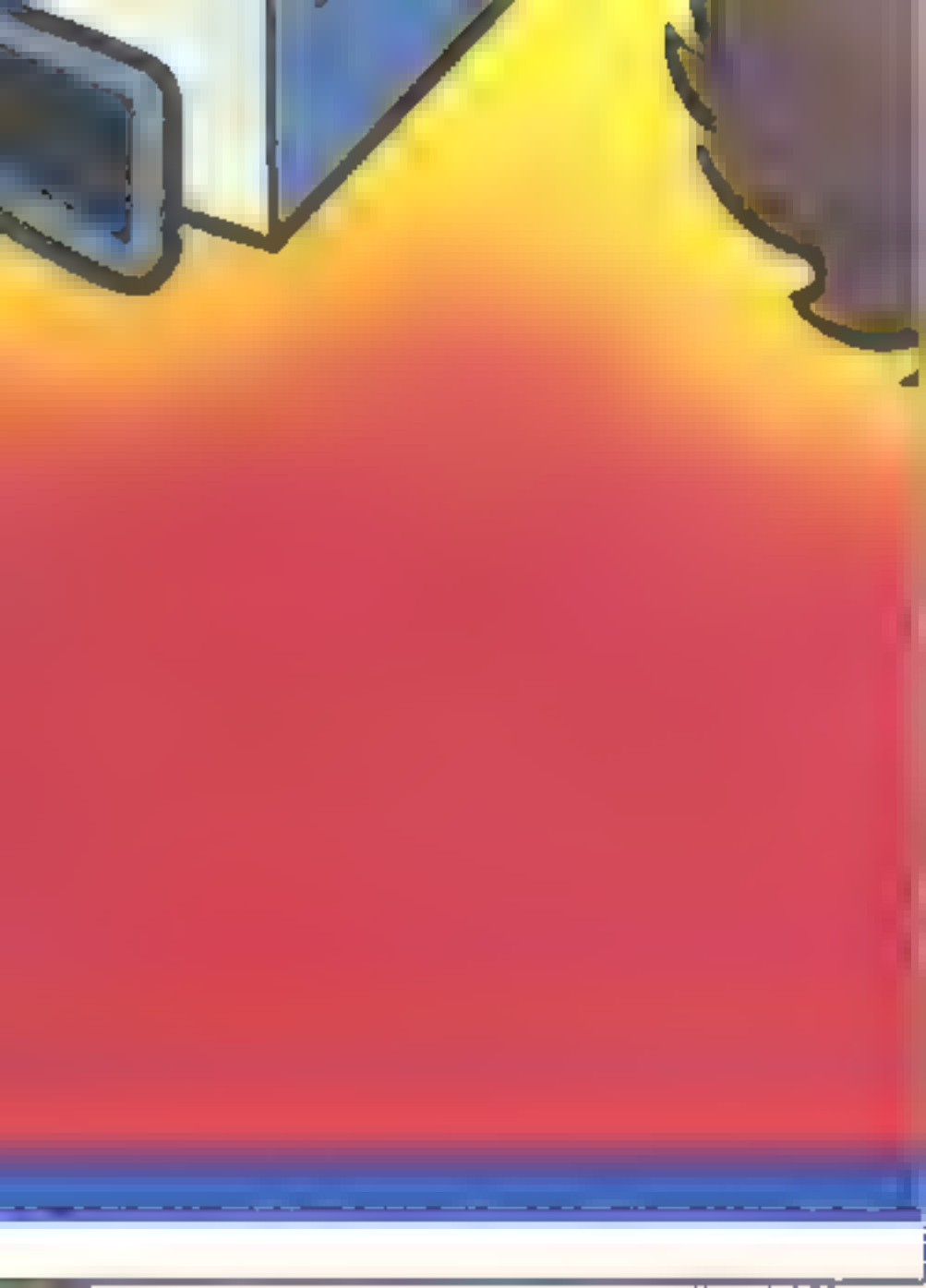
I'M APE OVER  
DONKEY KONG!



The Prime  
Carpenter

BANANAS!





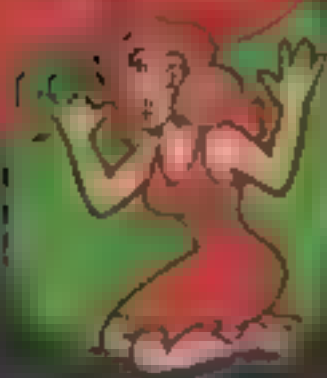
I EAT  
QUARTERS





TM

1  
2  
3  
4  
5  
6  
7  
8  
9  
10  
11  
12

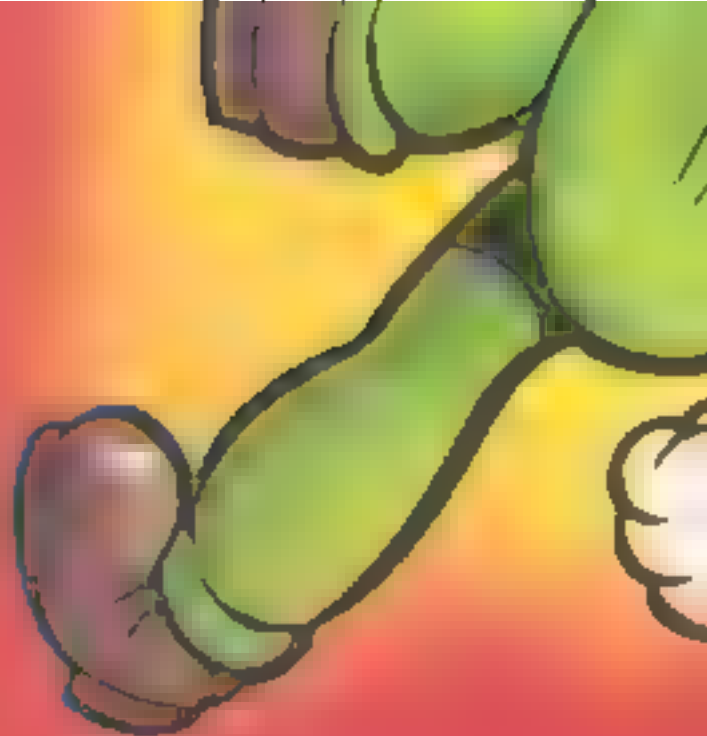


1  
2  
3  
4  
5  
6  
7  
8  
9  
10  
11  
12



100  
**HOT**  
TO  
HANDLE

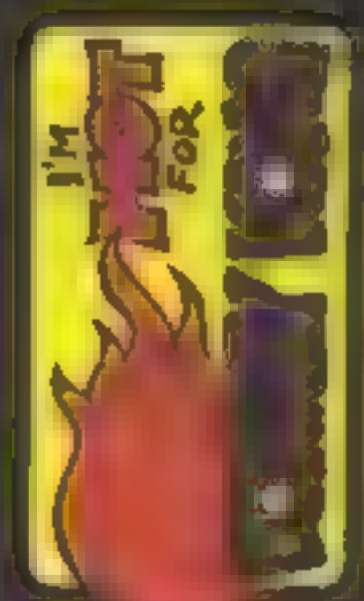








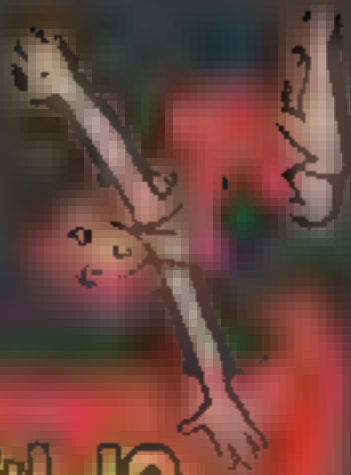




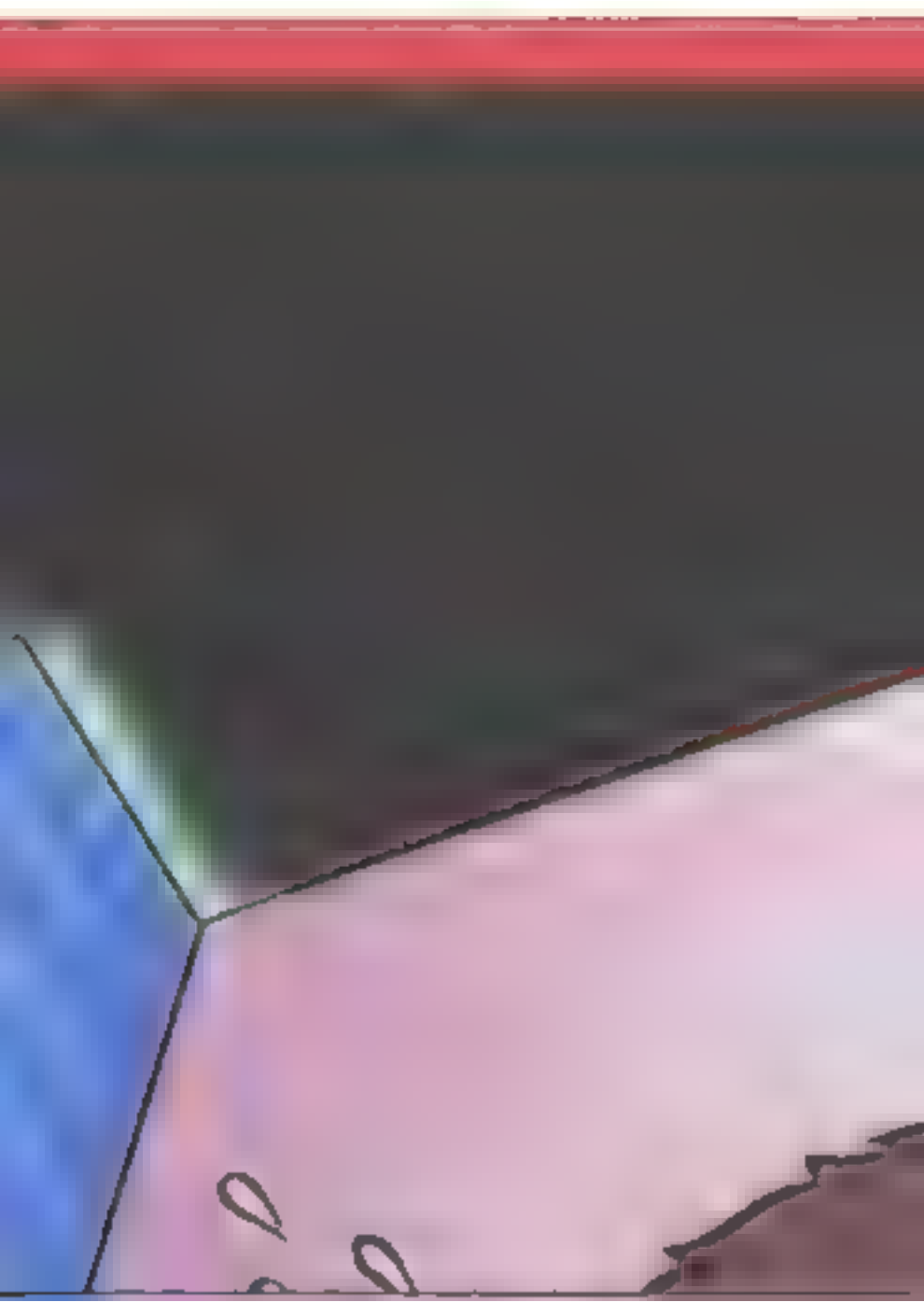


FORMI

FORMI  
SANTA

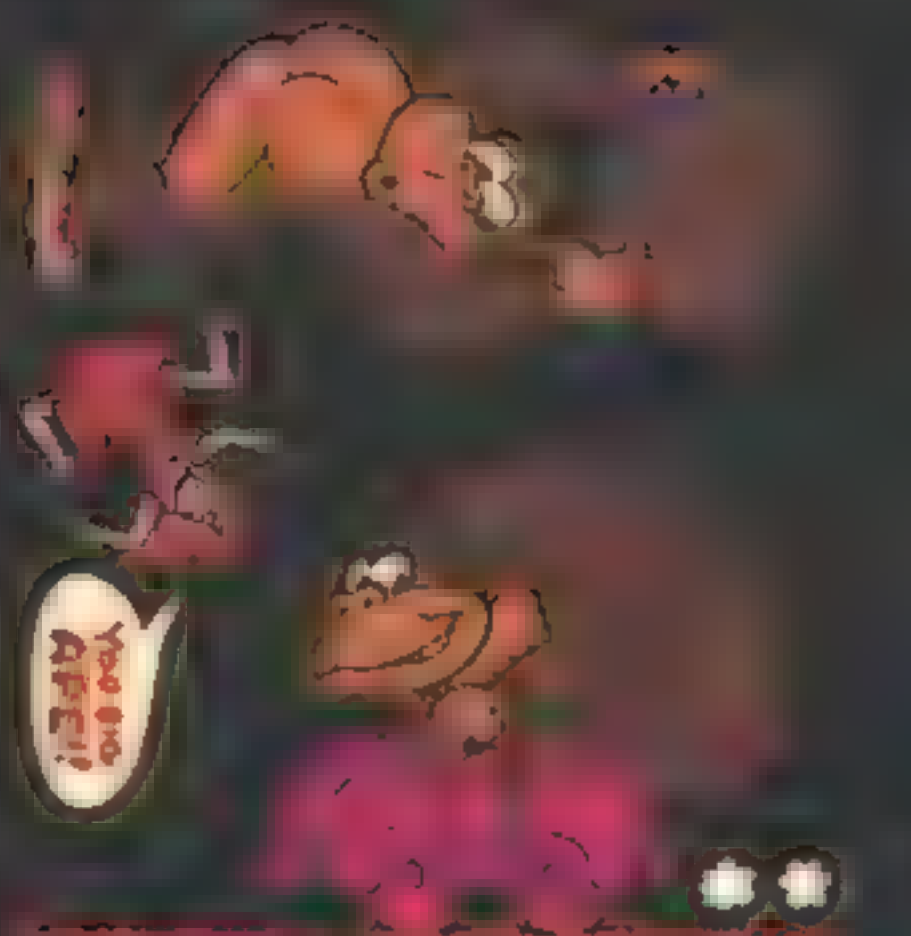


FORMI  
SANTA









You are  
APE!!

**HONK** IF YOU  
PLAY















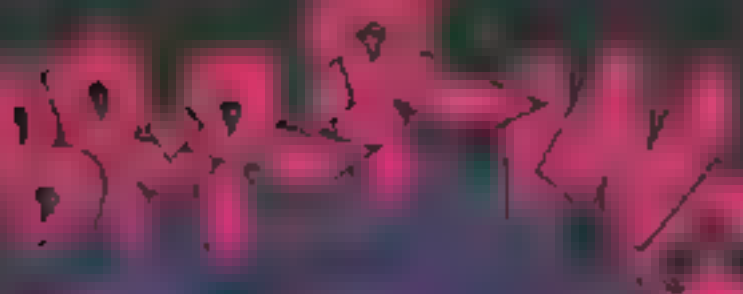
© 1994 Nintendo

Donkey Kong is a registered trademark of Nintendo.  
The name Donkey Kong is a registered trademark of Nintendo.



HELP!

SMILE!



BE LUCK!







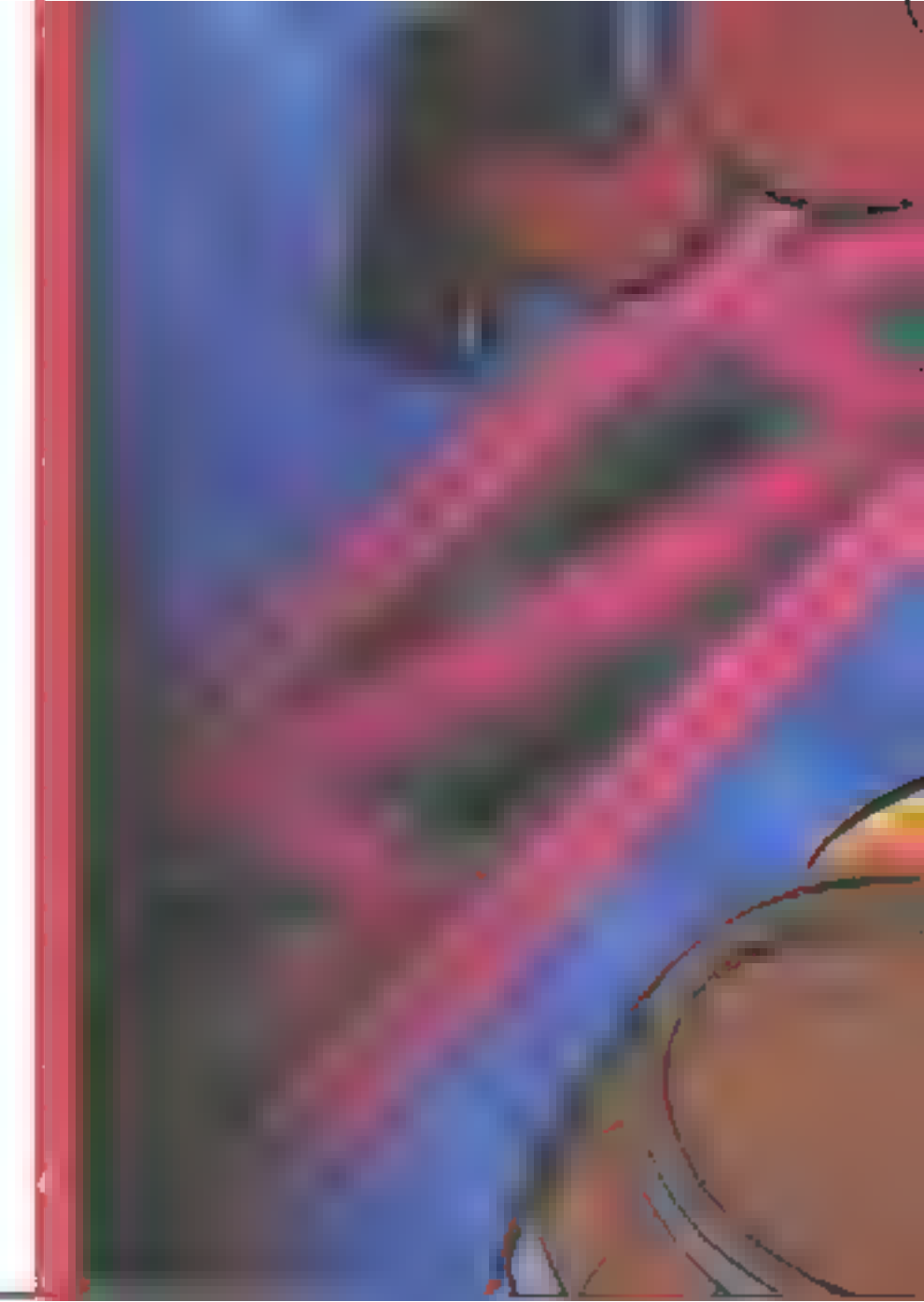
IS KING!



O ★

ISA







the 1990s, the number of people who have been employed in the public sector has increased in all countries.

There are a number of reasons for the increase in public sector employment. One of the main reasons is the increasing demand for public services. As the population ages, there is a need for more social security, health care, and education. In addition, the demand for public services has increased in many other areas, such as transportation, housing, and environmental protection. Another reason for the increase in public sector employment is the expansion of the public sector. Many countries have expanded the range of services provided by the public sector, which has led to an increase in the number of public sector employees.

There are also a number of other factors that have contributed to the increase in public sector employment. One of these factors is the increasing size of the public sector. In many countries, the public sector has grown in size over the years, which has led to an increase in the number of public sector employees. Another factor is the increasing demand for public services. As the population grows, there is a need for more public services, which has led to an increase in the number of public sector employees.

There are also a number of other factors that have contributed to the increase in public sector employment. One of these factors is the increasing size of the public sector. In many countries, the public sector has grown in size over the years, which has led to an increase in the number of public sector employees. Another factor is the increasing demand for public services. As the population grows, there is a need for more public services, which has led to an increase in the number of public sector employees.

There are also a number of other factors that have contributed to the increase in public sector employment. One of these factors is the increasing size of the public sector. In many countries, the public sector has grown in size over the years, which has led to an increase in the number of public sector employees. Another factor is the increasing demand for public services. As the population grows, there is a need for more public services, which has led to an increase in the number of public sector employees.

There are also a number of other factors that have contributed to the increase in public sector employment. One of these factors is the increasing size of the public sector. In many countries, the public sector has grown in size over the years, which has led to an increase in the number of public sector employees. Another factor is the increasing demand for public services. As the population grows, there is a need for more public services, which has led to an increase in the number of public sector employees.

There are also a number of other factors that have contributed to the increase in public sector employment. One of these factors is the increasing size of the public sector. In many countries, the public sector has grown in size over the years, which has led to an increase in the number of public sector employees. Another factor is the increasing demand for public services. As the population grows, there is a need for more public services, which has led to an increase in the number of public sector employees.



1992





JUMP  
MAN

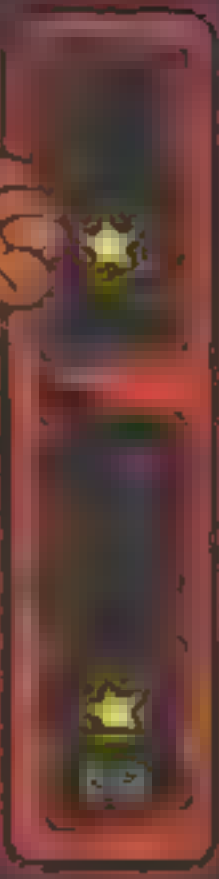
AT  
WORK

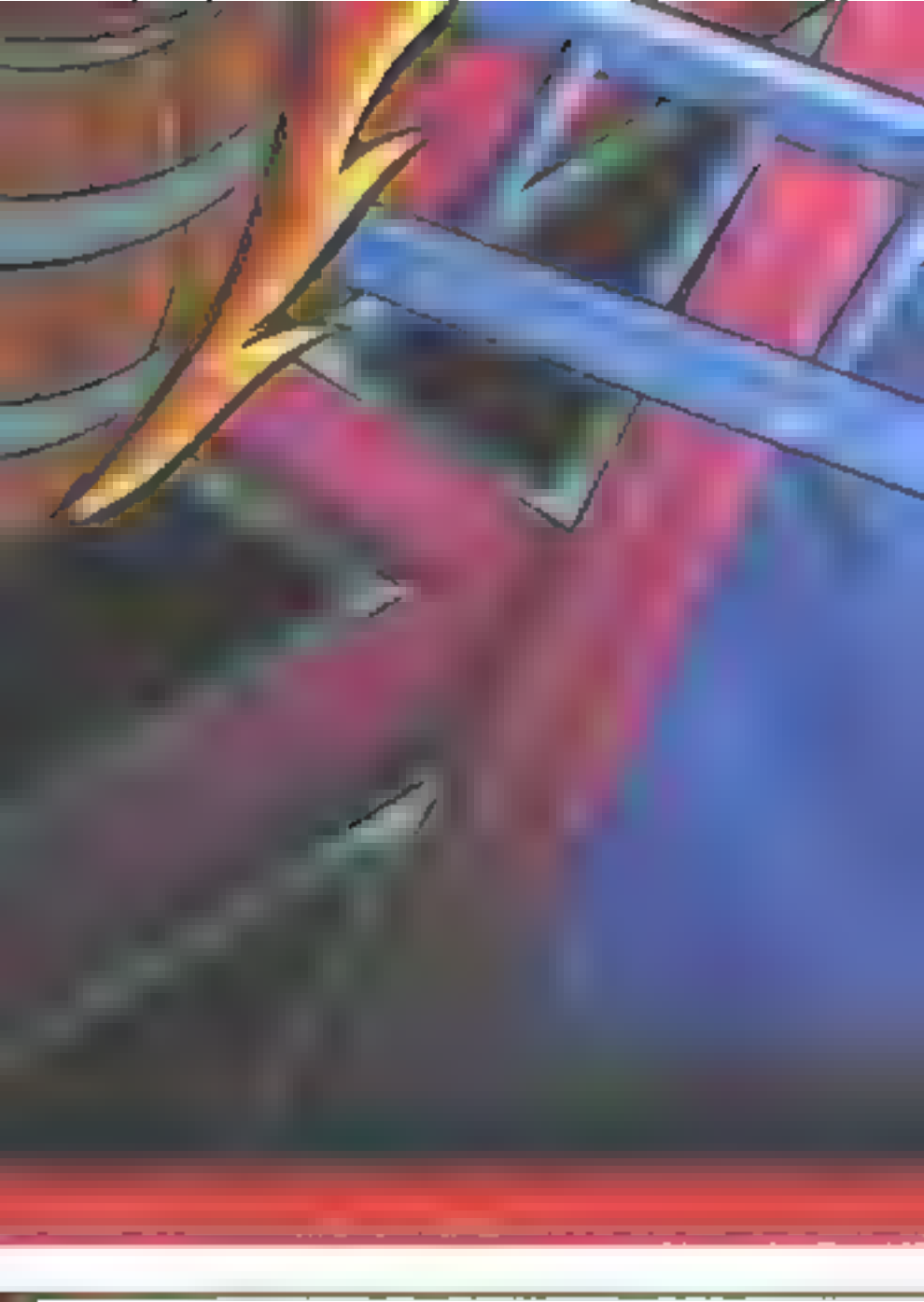


GORILLAS  
NEED LOVE, TOO



LOOK TURT CUTE

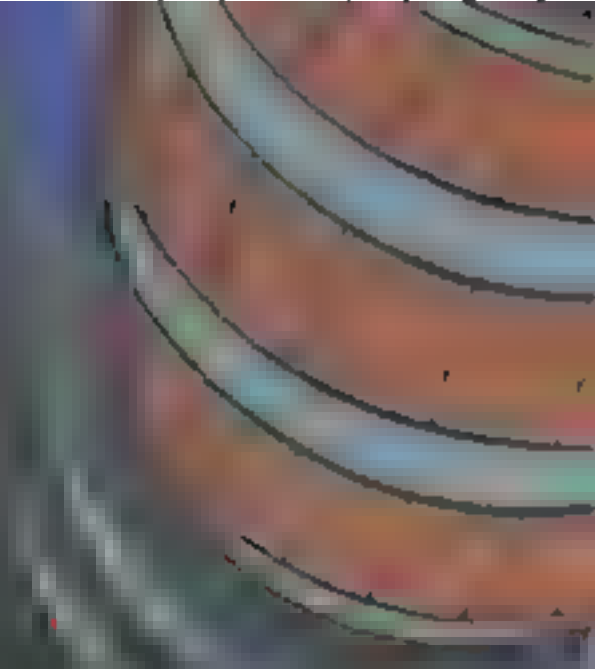


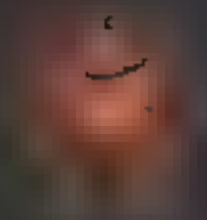
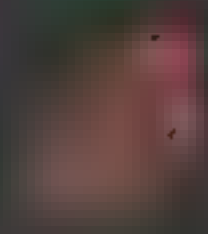
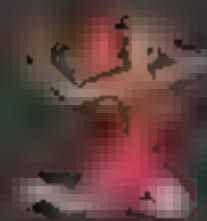


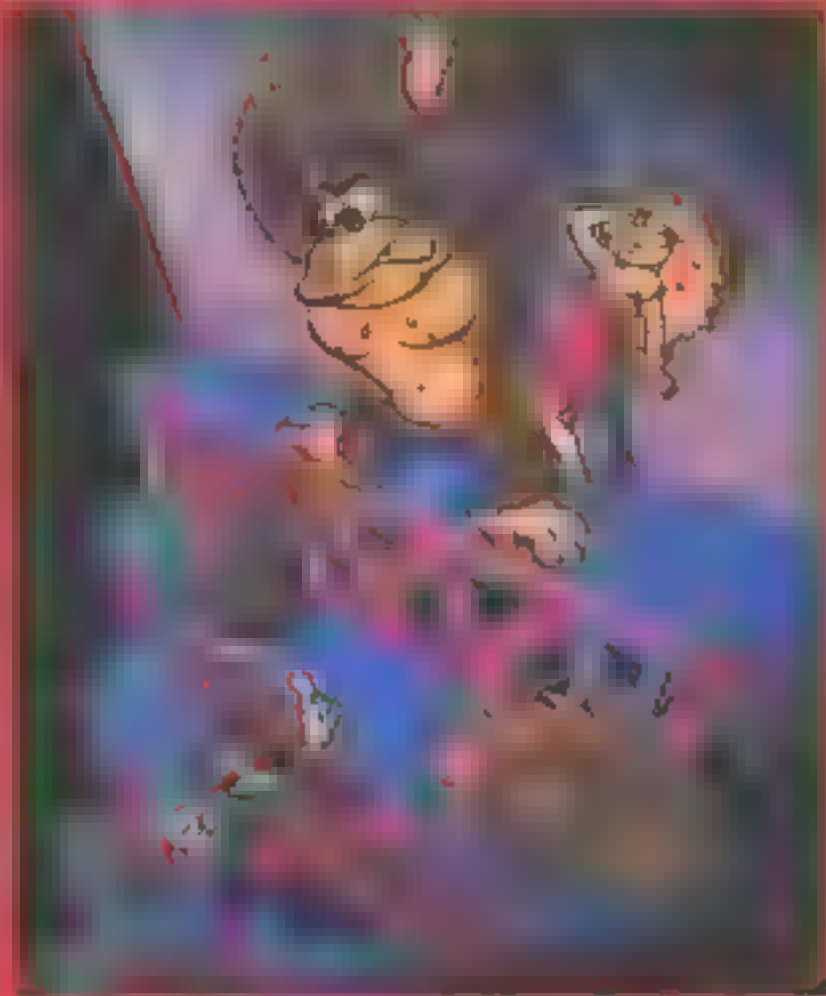


**Keep Movies**

*Chang*







APR 15 5 1905  
L. J. N. S. P. U. S.



# POKEY HOG



**Topps**

HOW TO PLAY

# DONKEY KONG™



1. Starting at MARIO, rub off one dot at a time.
2. Move up ladders or across beams, trying to rescue the Beautiful Girl from DONKEY KONG™
3. If you reach the dot nearest the Beautiful Girl, you have rescued her and scored 100 points.
4. Uncover a prize and gain bonus points.  
**HAMMER — 20 points**  
**BIRTHDAY CAKE — 50 points**  
**PHONE, UMBRELLA, LUNCHPAIL — 10 points**  
How high did you score?
5. Player is out if any combination of 3 fireballs and barrels is uncovered.
6. Any number of players can play. Take turns. The player with the highest score who reaches the girl, wins.
7. If all players are out, the one with the highest score wins.

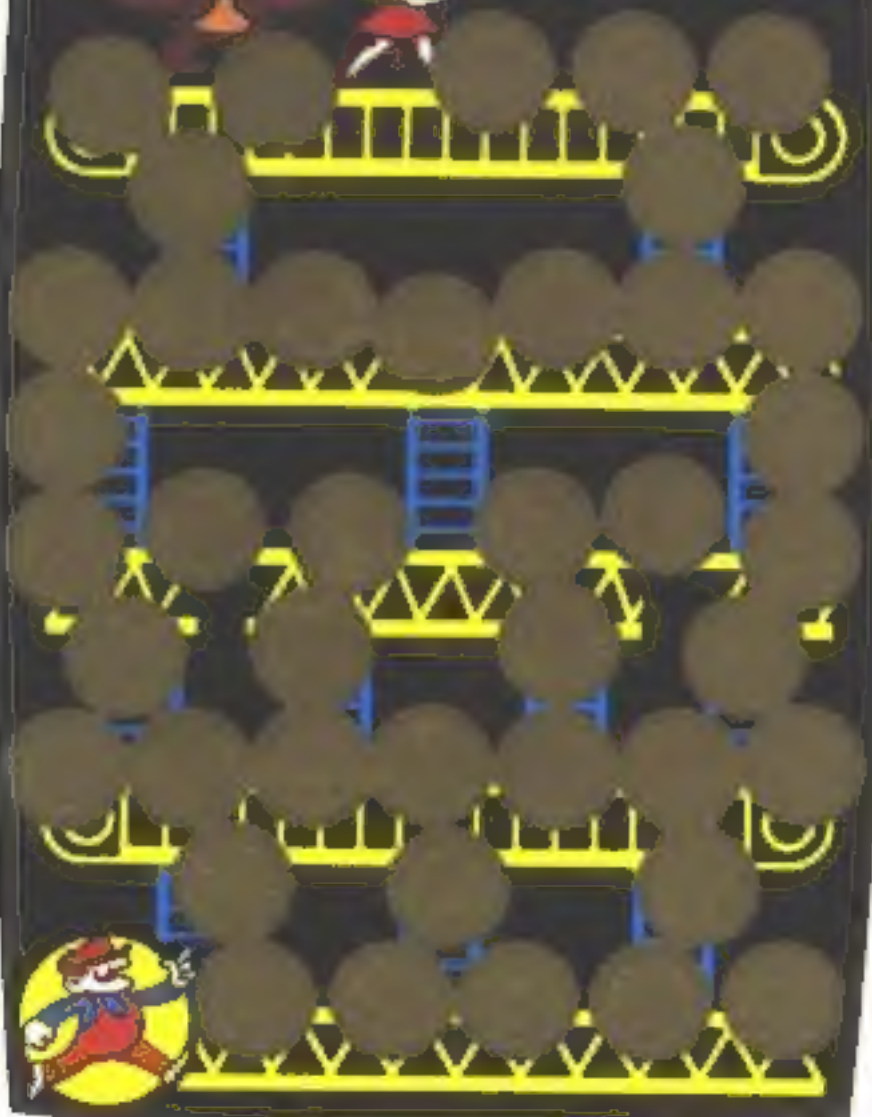
**YOUR NAME**

**YOUR SCORE**

# DONKEY KONG



# DONKEY KONG



DONKEY



KONG

